

PALM BEACH CURRUMBIN
STATE HIGH



PALM BEACH
CURRUMBIN
STATE HIGH

Middle School Handbook





Contents

Welcome from the Executive Principal	1
Statement of Intent	1
Message from the Head of Middle School	2
About PBC	3
Organisation of the School	3
Expert Teaching Team.....	4
Facilities	5
Map of PBC	5
General Information.....	5
Attendance.....	6
Parent Support and Communication	7
Homework and Assignments	8
Assessment Policy.....	8
Student Support.....	9
Optima Code.....	10
Transition from Primary School.....	11
Subject Selections	11
Middle School Electives	12
Sports Electives.....	12
Specialised Programs	13
Student Resource Scheme.....	14
Parents and Citizens' Association.....	14
Contact Us.....	14



Welcome from the Executive Principal

Palm Beach Currumbin State High (PBC) has established itself as one of Queensland's leading Independent Public schools with a proud record of academic, sporting and artistic achievement.

At the heart of this success is our school culture, woven around our school motto "Nil Sed Optima" which means "nothing but the best." On a day to day basis our culture demands that every student and member of staff, do their best in every lesson, every day.

As a large school, we have the distinct advantage of offering a wide range of opportunities that target the interest and ability levels of every student. We have methodically developed cutting edge programs and assembled an expert teaching team which combine to push young people to reach their full potential.

To ensure every student engages with these opportunities our school is organised into two smaller campuses:

The Middle School (Years 7 - 9) is focussed on developing in every student the prerequisite skills and knowledge for Senior School, and that each student gains exposure to a broad range of experiences which positions them to make informed specialisation decisions in the next phase of their schooling.

The Senior School (Years 10 - 12) is focussed on connecting every student to their preferred post-schooling pathway. It features comprehensive curriculum offerings that include OP, school based and vocational educational courses.

Both the Middle and Senior Schools have leadership, administration and student support teams that lead dedicated and highly trained staff in the quest of unlocking the potential of each and every student.

I encourage you to peruse this handbook, to gain an overall view of our school organisation, culture and support we provide our students.

Thank you for entrusting the education of your child to PBC, a public school of first choice.



Chris Capra
Executive Principal

Statement of Intent

Our Aim

To be a world-class school which nurtures the talents of every student, positioning them to succeed in their preferred careers and thrive in all dimensions of a balanced adult life including relationships, health, creativity, citizenship and recreation.

Values

We:

- Champion a learning culture built on high standards
- Offer a vigorous and well-rounded middle school curriculum
- Nurture social and emotional wellbeing
- Develop self-efficacy and regulation to foster independence
- Foster leadership, citizenship and capability



Message from the Head of Middle School

At PBC, our Middle School approach is based on three pillars. For students in early adolescence, we believe these are essential in creating a sense of belonging and connectedness to PBC, and for students to feel safe, confident and inspired to achieve in our learning environment.

These pillars are:

- **Engaging students in their learning** – this is achieved by high expectations and a rigorous curriculum where all students are challenged and given the opportunity to achieve. Using the basics, we also set students real world learning tasks where they can draw upon prior knowledge, use new technologies to create learning solutions and be futures-orientated.
- **Building strong relationships** with teachers and peers, which are critical for students' social growth and academic development.
- **Fostering success for all students** where students are given a variety of opportunities to excel in their chosen fields.

Quality Middle School teaching practices are the single most powerful school-based influence on student achievement. To support this approach our Middle School teachers are given extensive training and on-going professional development to ensure they have the skills and strategies in getting the best out of young adolescents.

To ensure our Middle School philosophy is achieved we set clear focus areas. These are:

- A smooth and successful transition into high school - during what can be a time of mixed experiences and emotions for all students, we aim to support them to settle and enjoy Year 7 and beyond.
- A strong foundation and a love of learning – we want to build on the basics learnt in primary school to extend and enrich students' learning. High expectations of students' conduct and approach to learning forms the basis for intellectual rigour to allow every student to reach their potential.
- Supporting a firm sense of self and progressively develop independence – we know how important it is to support students' personal growth and development through the teenage years, which can be full of excitement and challenges. As such we have a strong focus on developing values, such as respect, honesty and compassion as well as building skills around social and emotional safety, interpersonal skills, decision-making, goal setting and self-awareness in students.
- Providing new opportunities to expand students' learning and life experiences leading into their senior school years – PBC has a lot to offer and we encourage all students and families to get involved

Research tells us that the middle school years are when children really begin to blossom as people, so it is essential to support and encourage every child to find their 'spark'. At PBC, we believe in the potential of every student and aim to provide the environment, opportunities and relationships to help them flourish.

Anita Sgalippa
Head of School - Middle School





About PBC

In 2018 PBC will have over 2500 students enrolled in Years 7 to 12. Our school is enrolment managed; enrolments are open to students who reside within our local catchment area, or who achieve Selective Entry at PBC through one of our Excellence Programs.

Some of the key features of our school include:

- A proud tradition of achievement
- Selective Entry into our Excellence Programs in Academics, Sports and Creative Arts with a combined enrolment of over 1500 students
- Partnership with Griffith University
- An illustrious alumni which encourages students to aspire
- Modern facilities including technology enhanced classrooms, cutting edge science labs, Aquaculture Research Centre, theatre, modern library, Trade Training Centre fitted out with extensive commercial kitchen equipment, industrial technology workshops, a well equipped gym and quality sporting facilities
- A Pathways Centre and Guidance Officers, connecting every Senior School student to their preferred career, through university, apprenticeship or traineeship
- An Education Access Centre that ensures all students' academic and cultural needs are met through the provision of specialist support services
- High expectations of student behaviour and a comprehensive social and emotional learning curriculum, which teaches students the skills they need to be a responsible member of society
- A well established and vibrant International Program which has up to 40 students enrolled at any time. The students are welcomed by the PBC community and this broadens cultural awareness and acceptance
- Unique marine studies and aquatic practices programs featuring over 100 water crafts, which take advantage of the adjacent Currumbin Estuary
- Dedicated Middle School areas.

Organisation of the School

School Structure

PBC's Executive Principal leads the school community to develop, articulate and commit to a shared educational vision focussed on providing quality learning outcomes for all students. Our Executive Principal delegates authority to the:

Head of Middle School

The Head of Middle School is responsible for the day to day administration and direction of Years 7, 8 and 9. The Head of Middle School is supported by a Middle School Deputy, who provides additional support to students and parents.

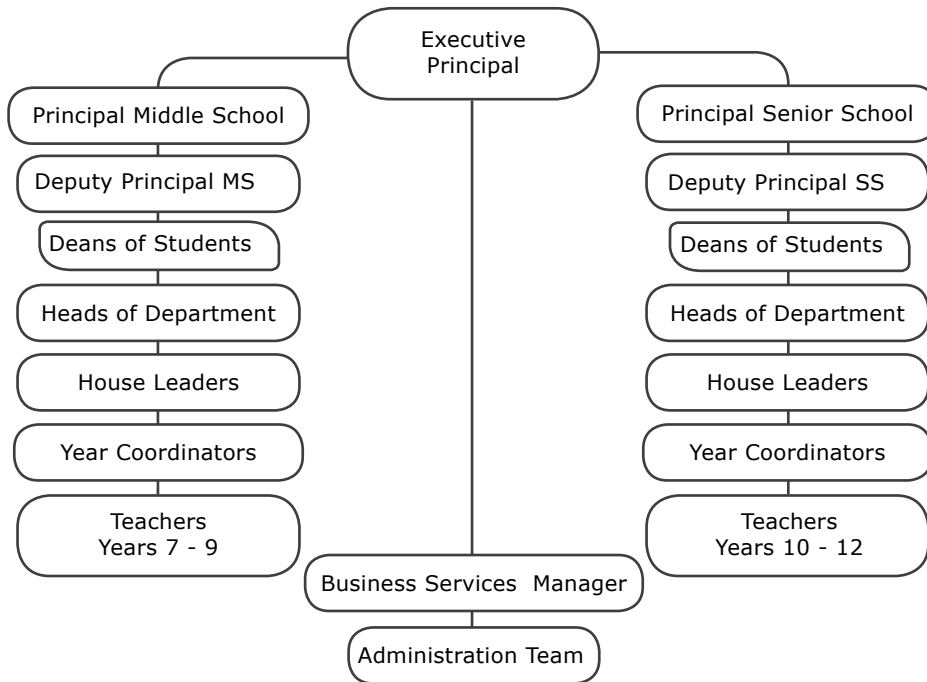
Head of Senior School

The Head of Senior School is responsible for the day to day administration and direction of Years 10, 11 and 12. The Head of Senior School is supported by a Senior School Deputy, who provides additional support to students and parents.





Leadership Structure



Expert Teaching Team

Our experienced and highly trained professional team understand the challenges that young students face in their transition from primary to secondary school.

Our team is focussed on smoothing this transition through welcoming each student, a program to encourage sense of belonging at PBC, and commitment to the high standards of conduct and effort our school demands.

The Head of Middle School is supported by the Middle School Deputy, Middle School Head of Department, Dean of Students and Year Level Coordinators, to share responsibility for the management of Years 7, 8 and 9, knowing every student and following their progress.

We value strong communication between the school and our parents. If you have any concerns or questions about your child, you can contact our teachers for a discussion by email or phone.

A complete list of our teacher contact email addresses can be found on our website at www.pbc-shs.eq.edu.au. Parent teacher interviews are conducted once a year.

We also encourage parents to subscribe to our fortnightly e-newsletter. The link to subscribe to the newsletter can be found on the homepage of the school website.



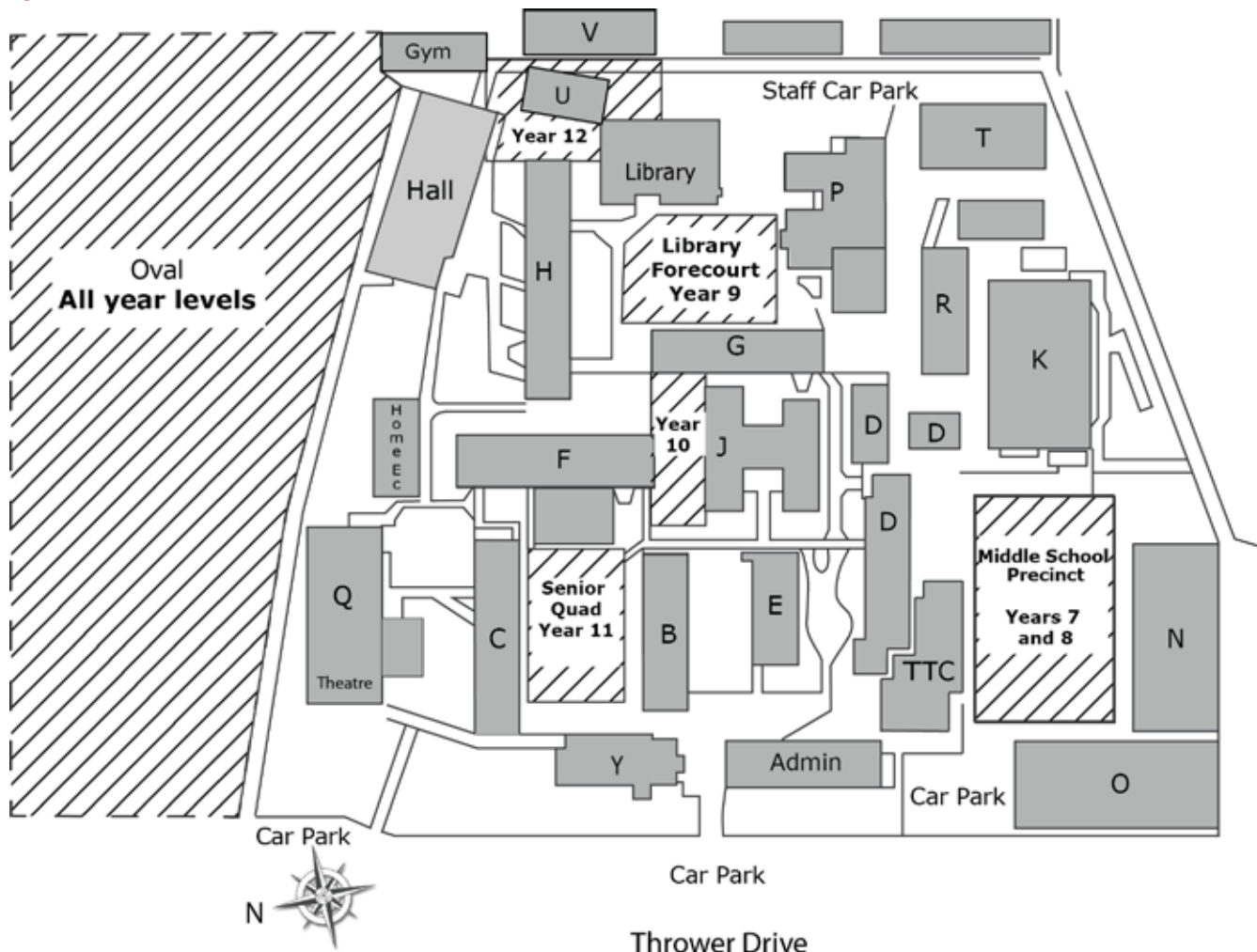


Facilities

The PBC Senior School campus is geographically distinct with purpose built facilities designed to elevate the learning experience of students. These facilities include state of the art rooms, science laboratories, training rooms, amenities including canteen and general teaching spaces, curriculum and resource centre, theatre, performance hall and practice spaces, designed specifically for the Senior School students .

All classrooms feature ethernet and wireless internet access, and projectors.

Map of PBC



General Information

Responsible Behaviour

We believe that it is reasonable to have high expectations of our students to, at all times, act in a manner that will bring credit to themselves, their families and the school. All members of our school community, students, parents and teachers, have rights and responsibilities that must be upheld to ensure that we are able to be safe, respected and learn in a supportive school environment.

The school has a comprehensive Responsible Behaviour Plan for students which is available for download from the school website. This policy includes our Optima Code (see page 10 of this handbook) which details our expectations of behaviour, our zero tolerance to bullying and promotion of positive behaviour. All parents and students are encouraged to become familiar with our Responsible Behaviour Plan.

School Uniform

PBC is a uniform school. All students are expected to accept and support these standards of dress, as determined by the Executive Principal and supported by the PBC P&C Association. This policy is an integral part of our school security program and supports the Department of Education and Training Workplace Health and Safety policy.

Students are required to wear the complete school uniform each day, and students should present to school in a “fresh, neat and tidy” uniform at all times. This standard will ensure that PBC maintains its fine reputation in the community and enhances our public image. Students must wear the complete dress uniform with enclosed black shoes and laces, or complete sports uniform, in accordance with school routine.

Daily Routine

All students should be at school by 8:30 am, allowing time to prepare themselves before school starts. Students are expected to arrive five minutes prior to CARE at 9:00am. Students who are late are expected to make up the lost time.

Each morning, students meet with their CARE teacher who explains the important events of the day and ensures the students know what is expected of them. Regular House and Year Level Assemblies are held each term.

Attendance

Students are expected to attend every day, be punctual, and must be present for roll marking at the beginning of every class unless there is a valid excuse for absence. An unacceptable attendance record will lead to disciplinary action. Parent Compulsory Schooling Obligation - Failure to Attend Section 178(4) of the Education (General Provisions) Act 2006

Absence from School (Full Day)

Parents/caregivers must notify and provide an explanation of a student absence via by email to absences@pbc-shs.eq.edu.au or via the QParents App. A note or medical certificate from the parent/caregiver explaining the absence is to be submitted via the drop box at Senior School or Middle School Student Services.

- If a student is likely to be absent for more than two days, parents/caregivers are requested to contact the office.
- Where an absence of more than 10 days is expected an Exemption Form must be completed and submitted to school for approval prior to the absence taking place. If the extended absence is due to overseas travel, all travel details need to be included with the form.

Late Arrivals

You are considered late if you arrive after 9:00am. If you arrive late, you must, **in every case** obtain a "late pass" from the Senior or Middle School Student Services Office, before being admitted to class. Late arrivals will only be approved with the presentation of a written note, with reason for lateness, from a parent/caregiver. Non-approved notes or failure to present a note will result in disciplinary action. You should be at school by 8:30am allowing time to prepare yourself before school starts - 9:00am Care class.

Leaving the School Grounds

To ensure safety, you are not to leave the school grounds at any time after you first arrive until school is dismissed, except with written permission from your parent/caregiver. Leaving early (sign-out) notes need to be written and signed by a parent/caregiver and delivered to Senior School or Middle School Student Services prior to 8:45am that day. Notes approved by a Dean of Students should then be collected prior to signing out of school. Non-approved notes and absences may lead to disciplinary action. It is appropriate for you to sign out **no more** than three times a term for an appointment or an activity during school hours. The sign out note must specify the following:

- The specific reason for signing out (doctors, dentist, etc).
- The time and date that you need to sign out of school.
- If a medical appointment, the time, location and professional that you have the appointment with must also be listed.

Notes may not be approved if the above information has not been provided.

You must show the signed note to your class teacher at the requested leaving time. Report to Middle or Senior School Student Service Office with the signed note and sign out. If you become ill at school and are sent home you will be issued with a leaving slip. If you return later in the day you need to report to your relevant Student Services Office and sign in. Year Coordinators may contact home to query the validity/frequency of appointments during school hours.





Parent Support and Communication with the School

Administration Office

The front administration office provides a personal contact point for parents/caregivers. Our reception staff are happy to assist with any enquiries and guide you through the enrolment process. Hours are from 8:00am to 4:00pm daily. PBC has an email mailbox specifically to facilitate communication between the school and parents/caregivers. Please email any concerns or feedback to the school at parentsupport@pbc-shs.eq.edu.au.

PBC website

Our school website www.pbc-shs.eq.edu.au is a primary source of information for enrolments, curriculum, student support services and programs, calendar and news. Email addresses for all teaching staff can be found under the 'Contact Us' tab of the website.

Middle School Student Services

Students must report to the Middle School Student Services office (D Block) when arriving late for school, have lost their class, or need any general information. If a parent/caregiver needs to contact their young person or leave something for them, it must be done through the main Student Services office. Hours are from 8:00am to 4:00pm daily.

Newsletter

Our fortnightly e-newsletter is a fantastic way to stay up to date with school news, student achievements, upcoming events, and important information from the Middle and Senior Schools. Please visit our website to subscribe to this e-newsletter.

Facebook

Remember to "Like" our school on Facebook to keep up to date with student achievements, upcoming events, and news: www.facebook.com/PalmBeachCurrumbinStateHigh.

We would like to encourage parents to email us with any recent great achievements from your student. These achievements can be in The Arts, sporting, academic or community service.

Please email us at news@pbc-shs.eq.edu.au with details of your student's achievement, photos, and/or any links to media articles that we can share on our school Facebook page and e-newsletter.

QParents

The QParents App provides a more convenient, easier way for parents and legal guardians of Queensland state school students to interact with their child's school. Parents will have secure, online access to their child's student information, anytime, anywhere, through a smartphone, tablet or computer.

Complaints

During the course of your child's school years, you may have cause to make a complaint about an issue with your child's education. There are processes and support structures in place to enable parents and students to work through any issues they may have with Education Queensland provision. To view our Complaints Policy and Procedure, please visit the 'Policy and Procedure' tab on our school website.

Technology: Acceptable Use

All students and parents/caregivers must sign our Internet and Network Access Agreement form contained in the General Enrolment pack to allow them to access the system. Unacceptable use of computer, e-mail or internet will result in withdrawal of access privileges and serious breaches will be dealt with under the School Behaviour Management plan. Any inappropriate action which damages or gains unauthorised access to any part of the school computer system is regarded as a very serious breach of our Whole School Communications Device Policy and will be dealt with accordingly.

BYOD

The Bring Your Own Device (BYOD) program allows students to bring an IT device to PBC that best supports their learning needs (within specifications).

By moving to a BYOD model, parents/caregivers and students have greater choice in device, functionality and budget. IT devices are a powerful means of differentiating and personalising a student's education, and student-owned devices facilitate their choice over which device best suits their learning and communication style.

Teachers will work with students to ensure everyone can access and view a student's final work in appropriate formats as necessary. For more information about device specifications, please visit our website:

www.pbc-shs.eq.edu.au/Supportandresources/Pages/Bring-Your-Own-Device.aspx

Visitors to the School

The safety and welfare of our students is our prime concern. Schools are not public places and persons must not be on the premises without the permission of the Executive Principal. For security reasons, all visitors to the school (including parents/caregivers) must always report to the front office on arrival. A visitor's pass is required to leave the main office building and visit other areas of the school.

First Aid and Illness

Parents are requested not to send students to school if they are unwell. Students who become ill at school should report to the Sick Bay where arrangements will be made for them to rest for a short period, or parents will be asked to come and collect them. Medical opinion may be sought or an ambulance called if it is deemed in the student's best interest and parents cannot be contacted quickly. Our school has staff specially trained in the delivery of First Aid.



Emergency Contact/Change of Address/Family Situation

It is essential that the school has up-to-date contact phone numbers. In the case of an emergency, we must be able to reach you or your emergency contact quickly. Please ensure that any change of address, telephone or other family details are provided in writing to the front office promptly so our records are current. Additionally, a copy of any relevant court orders for your student is required to ensure we provide safe and appropriate access to them.

Much of the school's correspondence, including student reports, are sent via email. Please ensure the school has details of your current email address.

Canteen

The Middle School canteen is open before school and at lunch breaks from the first day of school. Voluntary assistance is greatly appreciated. If you are able to help, please contact the Canteen Convenor by calling 07 5525 9343.

Leaving the School Grounds

To ensure safety, students are not to leave the school grounds at any time after their first arrival until school is dismissed, except with written permission from their parent/caregiver, approval by the Head or Deputy of Middle School and signing out at Middle School Student Services. It is only appropriate for students to sign out two times a term for an appointment or an activity during school hours. Notes must be provided to the Middle School office between 8:15 am and 8:45 am.

Personal Property/Lost Property

All students are expected to take care of their personal property. Do not bring unnecessary items to school. Money, wallets, pens, instruments, calculators, computers and watches should not be left unsupervised. The school is unable to accept responsibility for lost items. Labelling of school uniforms and personal equipment is essential.

Homework and Assignments

How much time for Homework?

In the middle phase of schooling, homework should be completed daily or over a weekly or fortnightly period.

Year 7: Homework is up to, but generally not more than, 15 minutes per subject per night, on average. This would include extension of class work, projects, assignments and research.

Years 8 and 9: Homework is up to, but generally not more than, 20 minutes per subject per night, on average.

In addition Middle School students will read for 1 hour per week and keep a Reading Log.

Students are given more responsibility for their learning than in primary school. They are required to engage in independent learning to complement work undertaken in class.

Tuesday Tutoring

Open to all PBC students in all year levels, Tuesday Tutoring is a voluntary service that provides students the opportunity to get help with their homework and assignments from qualified and friendly staff. Students have access to all library resources including printers, computers, internet and books. Please contact the library for more details.

Assignments

Assignments are set by teachers and deadlines must be observed. Students' work must be submitted to their teacher by the due date. The exception is if a work extension is granted by the Head of Department. Students must provide support documentation to validate the extension request. Students are still required to complete the assignment in order to fulfil the course requirements. Please refer to the Assessment Policy for further details.

All assessment dates are published for students and parents each term.

Student Planner

The Student Planner has been developed as a learning and organisational tool. It plays an important role in assisting students to plan and manage their homework and assessment priorities in order to help them build strong and lasting study habits.

The Student Planner provides space for students and parents to:

- Develop a home learning and assessment timetable plan
- Set goals and targets
- Communicate with teachers about their student's progress

Students are required to bring their Planner with them to every class and assembly.

Assessment Policy

School Responsibilities

- Publish all draft and final assessment due dates on the school calendar and assessment task sheets
- Provide students with assessment instruments in an appropriate time frame
- Collect evidence at appropriate stages of the assessment process
- Contact home regarding concerns about progress on assessment, failure to submit drafts or final assessment
- Implement Behaviour Management Process for students who do not adhere to Assessment Policy, including detentions until draft requirements are submitted

Student Responsibilities



- Ensure all assessment tasks submitted are the original work of the student
- Use the school system of Referencing (APA style guide available at Library or in the Student Planner)
- Submit drafts and final items of work, which meet the mandated requirements of the course and demonstrate achievement against the standards and criteria of the subject. Save electronic copies of assessment items in their school folder
- Submit all assessment tasks by the due date
- When required, complete an 'Application for an Extension/Change of Date' or an 'Application for Special Provision' prior to due date as per PBC policy procedures
- When indicated on the task sheet, submit written assessment to 'Turn it In' and attach report to task

Parent/Caregiver Responsibilities

- Encourage students to submit all drafts and final assessment instruments by the due date
- Inform the appropriate school staff of any difficulties relating to the completion of assessment items and provide documentary evidence where necessary
- Contact the school if their student is absent on the assessment due date

Submission of Assessment Tasks

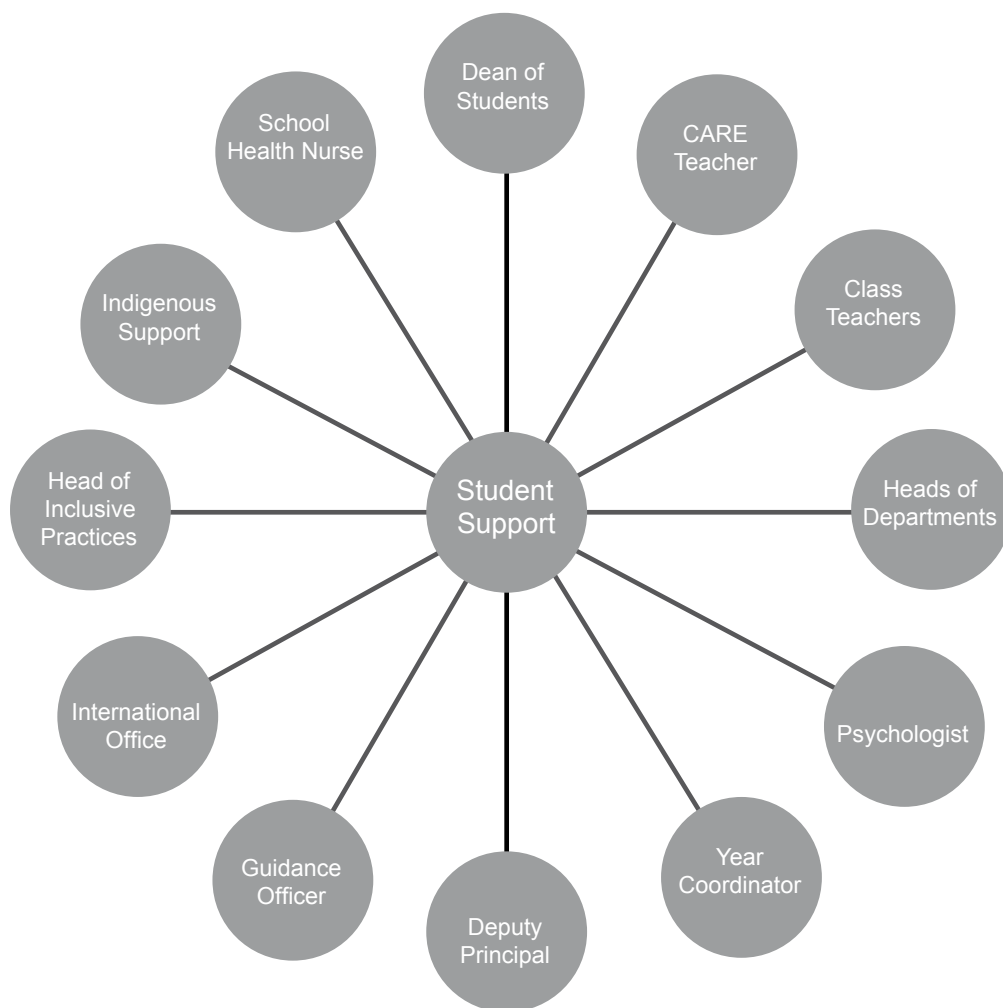
The final copy of the task must be submitted by 9:00 am on the due date. Where students have been given prior approval to email assessment items to teachers, the 9:00 am deadline must be adhered to.

To read our entire Assessment Policy, please refer to the school website.

Student Support

Our Student Support team is committed to creating a positive learning environment where students feel a strong sense of belonging and can achieve their best academic outcomes. Our team works together to support those students who may face a range of behavioural, social or emotional challenges. We also work closely with local community agencies to provide specialist support to our students if necessary.

The diagram below identifies the range of staff available to provide support for students.





Optima Code

	Be Safe	Be Respectful	Be a Learner
Common Expectations	<p>I report bullying and other problems.</p> <p>I wear my uniform correctly and proudly.</p> <p>I uphold the school's policy regarding technologies, including computers, phones and Ipods.</p>	<p>I say no to bullying.</p> <p>I follow teacher's instructions.</p> <p>I speak politely and use appropriate language.</p> <p>I keep the school vandalism and graffiti free.</p> <p>I respect other's belongings.</p>	<p>I actively participate in school.</p> <p>I do my best to learn, achieve and succeed.</p> <p>I attend class and school every day.</p>
Class	<p>I sit on my seat and at my desk properly.</p> <p>I follow the safety procedures of the class.</p> <p>I use equipment appropriately.</p> <p>I report incidents to staff.</p> <p>I keep all valuable items at home.</p> <p>I place my bag correctly on the bag rack or where directed.</p>	<p>I follow the teacher's instructions.</p> <p>I listen to the person who is speaking to the class.</p> <p>I put my hand up and wait silently to speak.</p> <p>I remove items of distractions and my hat when I enter the room.</p> <p>I am accepting of the opinions and contributions of others.</p>	<p>I do my class work to the best of my ability and strive to achieve my goals.</p> <p>I bring the equipment needed for each lesson.</p> <p>I complete and hand in all assessment tasks by the due date.</p> <p>I actively engage in class activities.</p> <p>I assist others in learning.</p>
Lunch Time	<p>I stay in school grounds and in my seating area.</p> <p>I act and interact safely.</p> <p>I report outsiders that are on school grounds to a teacher.</p> <p>I report inappropriate behaviours to a teacher.</p>	<p>I follow teacher and canteen staff instructions.</p> <p>I wait my turn at the canteen.</p> <p>I put my rubbish and unwanted food in the bins.</p>	<p>I use lunchtime effectively by having something to eat, talking to friends, playing a game, going to the toilet, visiting the library or seeing a teacher.</p>
Transport	<p>I get on and off the bus without pushing.</p> <p>I wait a safe distance whilst waiting for the public bus.</p> <p>I follow road rules and directions from teachers when walking to and from schools.</p> <p>I safely walk across the school car park.</p>	<p>I line up when I see my bus approaching.</p> <p>I speak politely to the bus driver and other passengers.</p> <p>I report any damage done to other student's bikes.</p> <p>I acknowledge other road users.</p>	<p>I model the right behaviour on the bus, when walking, crossing the road or retrieving my bike.</p> <p>I have my bus pass, Go Card or bus fare.</p>
Assemblies	<p>I enter and exit in an organised manner.</p> <p>I sit promptly and appropriately.</p> <p>I follow teacher direction.</p>	<p>I am quiet throughout assembly.</p> <p>I congratulate the achievements of others.</p> <p>I follow school policies when signing in and bringing absence notes.</p>	<p>I think about what is presented at assembly.</p> <p>I take my diary to record important information and dates.</p>
Community	<p>I act and interact safely with the community.</p> <p>I obey laws and rules in the community.</p>	<p>I am respectful to people and property.</p> <p>I speak politely and offer assistance to community members.</p>	<p>I participate in community activities and events.</p>

Transition from Primary School

Each year during Term 4, PBC holds a Transition Day to welcome Year 6 students and their parents, prior to their commencement as students at PBC.

This exciting day gives our future Year 7 students the opportunity to meet many of their new classmates and high school teachers. Students spend the day in orientation activities and sample lessons, while parents are invited to attend a special meeting to find out practical ways to support a child through their move to high school.

Subject Selections

Aims of the Middle School Core Subjects Program

Literacy and numeracy skills are embedded across all learning areas in Years 7, 8 and 9. To further build on this, Year 7 and 8 students engage in explicit literacy and numeracy lessons that focus on foundational skill development ensuring that all students meet national standards. Through ascertaining students' strengths and those areas requiring targeted support, intervention and direct instruction is provided at weekly tutorials.

Year 7 and 8 Core Subjects

- English
- Mathematics
- Science
- Humanities
- Languages (Spanish, Japanese) or Literacy and Numeracy*
- Health and Physical Education

*Select students only

Year 9 Core Subjects

- English
- Mathematics
- Science
- Humanities (History)
- Health and Physical Education

English

The Key Learning Areas of English (KLA), encompasses three strands (Language, Literature and Literacy), which provide a distinct focus for student learning. These KLA's seek to develop students' understanding about literary, mass media and everyday texts, language use, and associated literacy practices.

Mathematics

To be effective citizens and participants in the economy, students need well developed numeracy and problem solving skills. These skills are developed by active participation in the classroom. Mathematics lessons are structured in three parts:

- Explicit teaching
- Guided practice
- Skill mastery





Science

The Science program seeks to develop an understanding of key concepts within a scientific framework. A major emphasis of the course is to empower the students to independently explore the world around them from a scientific perspective. This is facilitated through the acquisition of knowledge and the development of effective communication skills and problem solving strategies.

Humanities

Students explore environmental, cultural, economic and political systems across a range of settings and periods of time. Studies incorporate the traditional disciplines of History and Geography as well as elements of environmental education and civics.

Health & Physical Education

Our Physical Education Department is committed to providing students with a challenging physical and academic curriculum that promotes an understanding of and a passion for the benefits of lifelong participation in regular physical activity.

Languages Other Than English (LOTE)

The Year 7 and 8 language courses are designed to provide students skills in listening, speaking, reading and writing in either Japanese or Spanish. Students will find foreign language a useful asset in many future career choices.

Middle School Non-Core Subjects

Year 7 and 8

Students will study a semester each per year of the following non-core subjects:

The Arts	Topics include: Dance Drama Music Art Media	Technology	Topics include: Digital Design Food Engineering
-----------------	--	-------------------	---

Year 9 electives

Students may choose two of these subjects:

The Arts	Music Dance Drama Visual Arts Media Studies
Technology	Food Technology Digital Technology Engineering Design
Additional Humanities	Geography Economics and Business Information and Communication Technologies
LOTE	Japanese Spanish

Sports Electives

Our school offers a wide range of sports for all ages and abilities. Interschool sport is available to all students during Semester 1, and is compulsory for Sports Excellence students. Recreational Sport is compulsory for all students not involved with interschool sport, and offers many diverse activities.

Sport is conducted 1 weekday afternoon, from 12:15pm - 2:30pm during Semester 1 and 1:50pm - 3:05pm during Semester 2.

Recreational Sport choices

Each semester a wide variety of recreational sport choices are offered. Examples include:

Kayaking	Aerobics	Weights	Handball
Squash	Chess	Community Service activities	Netball
Surfing			

A list is made available each Semester so students can choose activities that interest them.

Interschool Sports

Interschool Sports include AFL, Basketball, Cricket, Netball, Rugby League, Soccer, Touch Football and Tennis.

There are three main school-based sporting carnivals throughout the year: the Swimming Carnival (Middle School only), Cross Country Carnival (nomination only) and Athletics Carnival. These carnivals act as selection trials for students to represent PBC at District Championships.

Specialised Programs

Selective Entry at PBC

Entry into our Excellence programs is by Selective Entry to PBC. Students had to undergo an examination for Academic Excellence (Year 7 only), audition/interview for Creative Arts Excellence and trial for Sports Excellence. Success students were notified prior to enrolling at PBC for Year 7.

Excellence Programs

PBC Excellence Programs are setting the pace for high achievement and providing exciting pathways for students to realise their dreams. Our mission is to mentor extraordinary young students to become the next generation of innovative and successful performers in the fields of Academia, Sport and Creative Arts. Acceptance into these programs is by Selective Entry to PBC.

Academic Excellence: The Academic Excellence Program challenges students to reach their highest academic potential through an innovative curriculum, creating a unique transition from high school to university. The program focuses on developing, extending and accelerating knowledge acquisition and higher order thinking in the core academic subjects of English, Maths, Science and SOSE. The individual talents of each student in the program are nurtured by our specialist trained teachers, providing support to an innovative curriculum that encourages students to become leaders in their field.

Sports Excellence: This elite training and coaching program for gifted and talented sporting students empowers them to pursue their sporting dreams. Students with demonstrated ability in one of PBC's targeted sports are supported through mentoring, training and education from nationally accredited and industry experienced coaches. Participants in the Sports Excellence Program gain pathways to Q.A.S, A.I.S College Programs, Professional and Olympic sports. The PBC Sports Excellence Program is Queensland's most successful specialised sports education program, balancing both the demands of schoolwork and sporting achievements.

Creative Arts Excellence: The Creative Arts Excellence Program sharpens the creative talents of artistic students through mentoring, practice and specialised training, paving the way for a future career in their chosen field. A supportive platform is provided for students to broaden their skills by working collaboratively with other students, industry artists, teachers and guest professionals. Creative Arts Excellence teachers and mentors nurture individual talent through close monitoring of student achievement. Specialised training in Music, Dance, Drama, Film and Media and Visual Art is offered through this program.

Learning Support

In order to cater for the educational needs of diverse learners who require support to achieve their full learning potential, PBC offers Literacy and Numeracy (LAN) classes and the UNE QuickSmart Literacy and Numeracy programs to students in Year 7 and 8. Both of these programs operate for the entire school calendar year.

PBC's Murri Jarjum program functions as a support network to the school's burgeoning cohort of Indigenous students. Academic, attendance and cultural support is offered to over 130 Indigenous students, from grades 7 – 12. Our Middle School students are fortunate enough to attend the Deadly Choices program, which affords students the opportunity to work and learn with Indigenous health ambassadors and local sporting legends. Students of all grades are also given the opportunity to attend excursions such as Bond University's AIME program and the Gold Coast's very own Indigenous cultural centre, Jellurgal. Additional academic support is provided to senior students in mapping out their senior schooling and planning their post-schooling pathways, while all Indigenous students are also offered extra tutoring in our Wednesday afternoon Mibunn tutoring program.

Inclusive Practices

Inclusive Practices includes verified students through Education Queensland. Inclusive Practices teachers and teacher aides provide classes, programs, adjusted or modified curriculum to be accessed on the basis of individual student need. The key goals are independence, resilience and social/emotional competencies for all students. Students are positioned in classes based on their verification level and identified educational support requirements.





Student Resource Scheme

PBC operates a Student Resource Scheme. As a parent is directly responsible for providing the student with textbooks and other resources for a student's use at school, we choose to provide this service to assist parents with a cost effective alternative to purchasing textbooks, resources, consumable and/or materials.

The operation of the scheme is supported annually by the Parents and Citizens' Association (P&C), and is managed by the school. Participation in the scheme is voluntary, and no obligation is placed on a parent to participate.

If a parent chooses to participate in the scheme and completes the Participation Agreement Form, a fee will be due and payable by the parent for the items provided by the scheme to the student.

A parent who chooses not to participate in the scheme is responsible for providing the student with all items that would otherwise be provided to the student by the scheme as detailed on the *Year Level Requirements List* and/or *Subject Requirements List*, to enable the student to engage with the curriculum.

The school operates under FNM-PR-018: Student Resource Scheme and FNM-PR-019 State Education Fees where we ask parents/caregivers to pay specific subject fees (where applicable) towards the subjects/certificate courses that students elect to undertake each year and/or Excellence programs offered through Selective Entry.

Parents and Citizens' Association

The Parents and Citizens' Association promotes the welfare of students and the development of the school. Meetings are held on the third Tuesday of each month at 6:30 pm in the Administration Block.

Parents are encouraged to come along, even if you are unable to attend every time. The P&C can be contacted directly by emailing pandc@pbc-shs.eq.edu.au.

Contact Us

Front Office hours	Monday to Friday, 8:00am to 4:00pm
Street address	Thrower Drive, Palm Beach, QLD 4221
Postal address	Locked Mail Bag 1, Currumbin, QLD 4223
Website	www.pbc-shs.eq.edu.au
Email	info@pbc-shs.eq.edu.au
Facebook	www.facebook.com/PalmBeachCurrumbinStateHigh www.facebook.com/PBCAlliance
Phone	07 5525 9333
Fax	07 5525 9300
Executive Principal	the.principal@pbc-shs.eq.edu.au
Head of Senior School	admin@pbc-shs.eq.edu.au
Head of Middle School	admin@pbc-shs.eq.edu.au
P&C Association	pandc@pbc-shs.eq.edu.au
Absences	absences@pbc-shs.eq.edu.au
Parent Support	parentsupport@pbc-shs.eq.edu.au
QParents	Visit www.qparents.qld.edu.au to register
QSchools App	Download via Apple iTunes store, Google Play and Windows Stores





PALM BEACH
CURRUMBIN

STATE HIGH

Thrower Drive Palm Beach
Queensland 4221 Australia

Locked Mail Bag 1 Currumbin
Queensland 4223 Australia

Telephone (07) 5525 9333
Facsimile (07) 5525 9300
info@pbc-shs.eq.edu.au

www.pbc-shs.eq.edu.au

www.facebook.com/PalmBeachCurrumbinStateHigh

The Department of Education and Training
trading as Education Queensland International (EQI)
CRICOS Provider Number 00608A