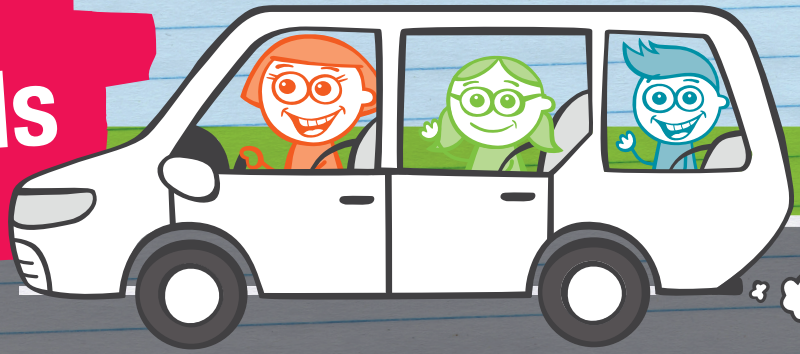


Safe parking around schools



School zones can be busy places, especially during the start and end of the school day. Pick-up and drop-off are the busiest times outside a school. With an increased number of pedestrians and vehicles around, motorists need to take care when parking to keep the roads safe for everyone.

Always remember

- Obeying parking signs and road rules is key to creating a safe environment for children and road users.
- Parking further away and walking children to their school gate may be required to park safely and legally.
- Be aware that road and parking rules may change during school hours.

Did you know

It is an offence to stop:

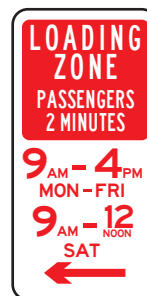
- 20m before or 10m after a signposted pedestrian or supervised children's crossing.
- 20m before or 10m after a bus stop or within a bus zone (bayed area).
- Within 10m of an intersection or corner.
- On a footpath or nature strip (verge parking).
- In a way that blocks a driveway, unless picking up or dropping off passengers.
- In a no parking zone for more than 2 minutes.
- In a no stopping zone, or on a yellow line.
- Double parked at any time, as it blocks visibility and causes cars to overtake each other to proceed, creating a traffic hazard.
- In a disability accessible parking space without a valid permit.

For more information on the safe and legal parking, please visit the [City of Gold Coast website](#).



Unless you are driving a bus that seats more than 12 people (including the driver), you must not stop in a bus zone at any time.

You must not stop a vehicle closer than 20m before and 10m after a bus stop. This gives room for the bus to enter and exit safely.



The passenger loading zone sign indicates an area designated for picking up or dropping off passengers.

You must not remain in the zone for longer than signed (generally 2 minutes). This sign often displays time during which the loading zone applies.



A driver must not stop where a no stopping sign or yellow "no stopping" line applies, even to drop off or collect passengers.

No stopping areas may be delineated with a regulatory sign and/or with a continuous yellow line marked on the road.



We're all responsible as drivers to park safely.